

Disposal instructions

- If the installation is not used, any motor (or other materials) used in the installation must be removed.
- All components must be examined and categorised according to the applicable waste categories (e.g. electrical components, metals, plastics).
- The dismantled and categorised components must be recycled or disposed of in accordance with the country-specific legal regulations in force at the time of dismantling/ disassembling.
- Components marked with the crossed-out bin must not be disposed of with household waste. The installations have a lithium-ion battery.
- If in doubt, turn to your specialist retailer.
- In your own interest, please delete your personal data from the device before disposing of it.



Manufacturer of the installation:
erfal GmbH & Co. KG
Gewerbering 8
08223 Falkenstein



Important

- Improper assembly & dismantling can cause damage and injury. Any lost documents can be requested from the manufacturer before dismantling/ disassembling.
- The dismantling/ disassembling of the installation must be carried out by specialised personnel. The instructions in this document must be followed.
- The installation must only be assembled/ disassembled when fully wound up. [Optional - necessary for roller blinds]
- The installation must be disconnected from the power source before assembly/dismounting. It must be ensured that the installation is de-energised during the total assembly / disassembling process.
- Installation and start-up of the installation may only be carried out by qualified specialist companies/specialists.
- Installations with 230 V components may only be installed by qualified electricians or instructed persons under the direction and supervision of qualified electricians.



Caution

This document contains important operating and safety instructions in the frame of dismantling/ disassembling the product / installation. Activities labelled accordingly may only be carried out by qualified personnel.

Please keep this document until the product / installation is disposed of.

Please hand over the document to the new owner when passing on the product.

Rechargeable lithium units are typically integrated into motorised installations of this type. To fulfil specific compatibility requirements, other systems or types can be integrated instead in individual cases. If in doubt, please turn to the manufacturer or your specialist retailer.

The manufacturer has the right to refuse any liability, warranty/guarantee that goes beyond the right minimum claim. Any modification of the installation that goes beyond the standard, or the use of unauthorised materials or similar, will result in the owner or operator losing all claims against the manufacturer.

For non-battery installations:

- Warning: Electric shock! When working in the immediate vicinity of live parts, an electric shock can be triggered by touching them.

De-energise the installation and secure it against being switched on again!

11 / 2024

subject to technical change

 **erfal**
A new room experience

Homematic IP pleated blind

Dismantling
instructions
radio battery drive



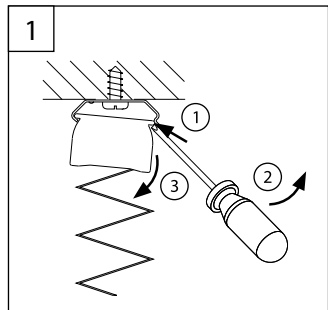
04046046609988

A Disassembly

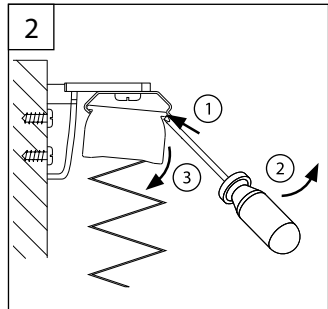
Pleated blind

Loosen the clip with a screwdriver and remove the system.

Ceiling clip



Wall angle



Motor



Hexagon key, sizes 1,5 - 3,5



Pointed pliers

Before and during Disassembly of the motor check that there is **no voltage**!

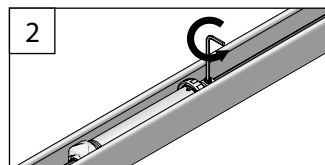
Secure the installation against falling during the entire disassembly process!

Lack of knowledge can lead to damage or even injury. Please ensure proper disassembling by qualified personnel.

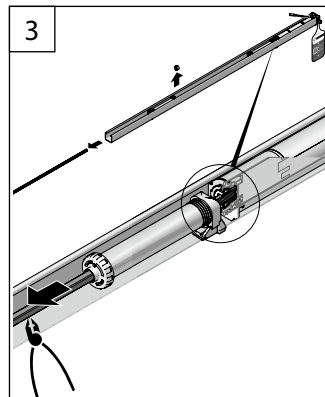


Check whether the battery pack is connected internally or externally.

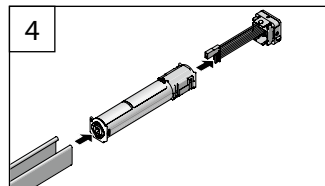
- Remove top profile end caps laterally
- Pull out the battery pack



Loosen the retentions of the



Pull the shaft laterally out of the motor head.



Pull the side cover and motor laterally out of the top profile.